

## **20-0-0-24 AMMONIUM SULPHATE**

A nitrogen and sulfur fertilizer used for lawns and pastures that are weak and need a boost to get them growing.

**RATE:** 200-300lbs/pasture acre

300-500lbs/grass hay acre

**TIMING:** spring

## **20-10-10-7**

A balanced fertilizer with a multitude of uses. It is a great starter fertilizer for most seedlings ( lawn, pasture and garden ). Pre-plant for sod or container stock. Used as a maintenance fertilizer for lawns, shrubs, and trees.

**RATE:** 200-300lbs/ pasture acre

300-500lbs/grass hay acre

**TIMING:** pre-plant, then as needed

## **25-6-6-4**

A custom pasture and hay blend. A multi-purpose fertilizer that satisfies phosphate needs in most Central Oregon soils.

**RATE:** 200-300lbs/pasture acre

300-400lbs/grass hay acre

**TIMING:** early thru mid summer

## **30-0-0-7**

A nitrogen and sulfur fertilizer that is used on lawns and pastures during spring and summer to promote growth.

**RATE:**150-200lbs/pasture acre

300-400lbs/grass hay acre

**TIMING:** spring- when plants begin to green up; again in late June or early July. After grazing or haying.

## **ORGANIC FERTILIZERS**

Organics improve the health of your plants by encouraging microbial action in the soil. More oxygen is made available thru the root system and increases the water holding capability. Organic products are designed to provide growth, health, and vigor without the nitrogen that most fertilizers contain. Our organic fertilizers are granular, and are easy to spread.

## **6-2-0-4%Fe MILORGANITE**

Provides a slow release nitrogen that is rich in iron to help develop a healthy lawn. It supplies organic matter improving penetration of air, moisture, and nutrients to enhance the population of beneficial microbes.

**RATE:** spring-25 lbs/1000 sq.ft.

Summer and fall-25 lbs/2000 sq.ft.

**TIMING:** Early spring thru late fall.

## **8-2-4 NUTRI-RICH**

This dust free, low odor, easy to use fertilizer encourages strong roots while promoting beneficial microbial activity. The slow release nitrogen lasts up to 3 months. Its' extensive micronutrient package will strengthen plants.

**RATE:** Turf-50lbs/3000 sq.ft. (see label for other application rates).

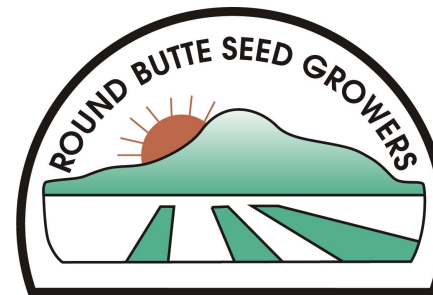
**TIMING:** Early spring thru late fall.

## **10-2-6 RINGER**

A faster acting organic fertilizer. Helps restore lawns that are depleted of nutrients. Bringing lawns back to life with a healthy vibrant appearance. See results in 3-5 days, lasts up to 8 weeks.

**RATE:**25 lbs/2500 sq.ft.

**TIMING:** see label for details.



[www.rbseed.com](http://www.rbseed.com)

[info@rbseed.com](mailto:info@rbseed.com)

### **CULVER STATION**

603 FIRST STREET

CULVER, OR. 97734

541-546-6603

### **BEND**

63353 NELS ANDERSON RD.

BEND, OR. 97701

541-385-7001

### **PRINEVILLE**

1225 NW GARDNER RD.

PRINEVILLE, OR. 97754

541-447-5609

### **AGRICULTURAL OUTLET**

57764 FOSSIL LAKE RD.

CHRISTMAS VALLEY, OR. 97786

541-576-2601

### **CORPORATE & MANUFACTURING**

505 C. STREET

CULVER, OR. 97734

541-546-5222



## **FERTILIZERS**

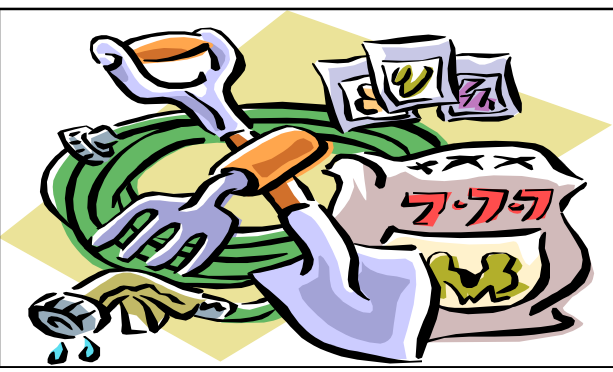
Originally formulated for professional lawn and turf managers, our fertilizers are now available to retail customers. Many of our superior quality, environmentally safe fertilizers are slow release according to real life environmental conditions. They are enriched with non-staining iron to promote vivid lawn and plant colors and are safe and easy to use. We also carry several 100% organic fertilizers. And our experts can design a custom fertilizer blend just for you.

### **N-P-K-S-Fe**

### **21-7-14-4-1.5fe**

The hyphenated numbers on the front label stand for the major nutrients the plants need-nitrogen (N), phosphorus (P), and potassium (K). The numbers, always given in the same order, represent the percentages of each of N, P, and K in the bag (by weight). Other nutrients are often found in fertilizer, such as sulfur (S) and iron (Fe).

**3/2009**



### **NITROGEN (N)**

The main nutrient for new, green growth and deep green foliage. Plants that are almost all leaf, such as lawn grasses, need plenty of nitrogen, so the first number is higher in fertilizers for lawns because grass must continually renew itself after mowing.

### **PHOSPHORUS (P)**

Promotes healthy root development to strengthen plants and promote large flower blooms. Plenty of phosphorus is great for bulbs, perennials and newly planted trees and shrubs.

### **POTASSIUM (K)**

Improves the overall health of plants. It helps them withstand very hot or cold weather and defends against diseases. Most soils already have some potassium, so its' percentage is usually smaller than the other two. Fertilizers meant for fall often contain extra potassium to help prepare plants for cold weather.

### **SULFUR (S)**

Helps maintain a dark green color while encouraging more vigorous plant growth.

### **IRON (Fe)**

Is the minor element most often lacking in poor soils. It helps plants maintain a dark green color.

### **5-25-25-1 Starter**

A very good fertilizer when planting trees, shrubs, new lawns and annual or perennial plants. Excellent for wildflower plantings. Low nitrogen, high phosphate and pot ash that will not burn or promote lush foliage. Very good for root and cell wall development.

**RATE:**5-10lbs/1000 sq. ft.

**TIMING:** early spring thru fall.

### **10-20-20-4**

A special blend for starting and maintaining new lawn seedlings. Promotes blooming on flowers. Also works well as a fall fertilizer application on lawns, shrubs and gardens.

**RATE:** 8-10LBS/1000 SQ.FT.

**TIMING:** early spring thru fall.

### **14-14-14 Bloom (Osmocote)**

A 3 to 4 month professional, homogenous, controlled release nursery fertilizer for container grown annuals. All of the nutrients are combined with each uniformly coated pellet, insuring precise distribution and release.

**RATE:** see bag for application rates.

**TIMING:** As needed.

### **14-14-14 Landscape**

A professional, cost-effective 3 to 4 month fertilizer intended for landscaping. A portion of the nitrogen is uncoated to help establish the plant. The remaining nitrogen is control released. It has uncoated phosphorus, along with potassium to establish early root development. It also contains an excellent micro-nutrient package to enhance vigorous growth.

**RATE:** See bag for application rates.

**TIMING:** As needed.

### **15-5-10-7-4 fe 50% Slow Release**

A good year around fertilizer for lawns and turf. The iron will make grass a richer green without a lot of extra growth. This blend also has 50% time released nitrogen which provides a lush, green lawn without as much growth as conventional fertilizers. This slow-release provides nitrogen for up to 8 weeks. This is the favorite blend of landscapers and lawn care professionals.

**RATE:**8-10lbs/1000 sq. ft.

**TIMING:** early spring thru fall.

### **16-16-16-3**

A balanced fertilizer with a variety of uses. A good starter fertilizer for most seedlings ( lawn, pasture, flower and garden). A pre-plant for sod or container stock. And as a maintenance fertilizer for lawns, shrubs and trees (including fruit trees).

**RATE:**5-10lbs/1000 sq.ft.

**TIMING:** pre-plant then as needed.

### **20-10-10-3-2fe**

A great choice for quick green. The additional iron will provide a lush, deep green color. And the nitrogen will provide quick growth.

**RATE:**5-10lbs/1000 sq. ft.

**TIMING:** pre-plant then as needed.

### **20-20-20 Soluble**

A water soluble fertilizer with trace elements. Used for vegetable and flower gardens, trees, shrubs and lawns. Can be applied with a sprinkling can or a hose end sprayer. Also available in the following blends: 15-0-15 & 28-8-18.

**RATE:**1lb/2000 sq. ft.

4 teaspoons/gallon water

**TIMING:** As needed.

### **21-7-14-4-1.5 fe**

### **80% Slow Release**

A superior blend of slow-released fertilizer that provides nitrogen for up to 12 weeks. It includes iron for rich, dark green lawns. A good fertilizer for lawns and turf. This blend also has 80% time released nitrogen which provides a lush green lawn with less growth than conventional fertilizers.

**RATE:**7-10lbs/1000 sq. ft.

**TIMING:** spring, summer and fall.

### **25-3-3 Weed-n-Feed**

A lawn fertilizer for controlling weeds. Works best on young weeds that aren't well established.

**RATE:**4lbs/1000 sq. ft.

**TIMING:** Mid thru late spring.

### **GRANULAR GYPSUM**

A granulated gypsum. A source of sulfur to aid in loosening compact soil where better water penetration is needed.

**RATE:**5-10lbs/1000 sq. ft.

**TIMING:** As needed.

### **GRANULAR LIME**

A granular lime stone used for raising soil pH to eliminate moss and mushrooms. Helps release other nutrients into the soil.

**RATE:**25-50lbs/1000 sq. ft.

**TIMING:** As needed.

